

# THERMAL EXPERT™

Mobile Infrared Camera (TE-V1) VGA 640 x 480, 17 $\mu$ m pitch



8.5 mm  
Optional



19 mm  
Default



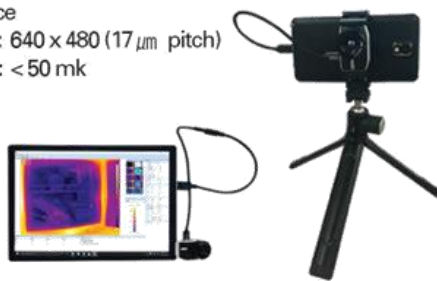
25 mm  
Optional



35 mm  
Optional

## Description

- High performance
- High resolution : 640 x 480 (17 $\mu$ m pitch)
- High sensitivity : < 50 mk



## Features

- Temperature measurement for whole pixel
- Superior image with native 307,200 pixels(640x480) resolution
- Interchangeable Lens
- Shutterless operation
- Easy graphical user interface
- Optional Lens(8.5mm/25mm/35mm)

## THERMAL EXPERT™ for Android

- Color palettes(12 color maps)
- Storage images(IR, visible with snapshot and video)
- Digital zooming (640 x 480, 480 x 360, 384 x 288, 240 x 180)
- Image view with visible(50:50, Twin, Overlay, Floating)
- Temperature Measurement (Alarm, Min/Max, Point/Line/Rectangle/Circle profile)
- Report(Generate pdf report)
- Level Span function



Level Span

## THERMAL EXPERT™ for Windows

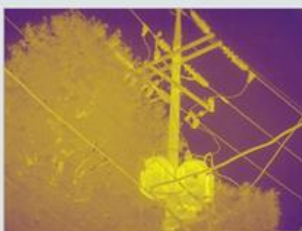
- Realtime Analysis Tool
- Check the temperature anywhere in picture using mark of Dot, Line, Square
- Alarm with sound by user's setting temperature degree
- Save and Load infrared Image with Mark
- Saving the movie with Mark is being implemented
- AIE Program(Adaptive Image Enhancement)



Window PC program

SEE THE NEW WORLD THROUGH i3system, Inc.

## Image from the THERMAL EXPERT™



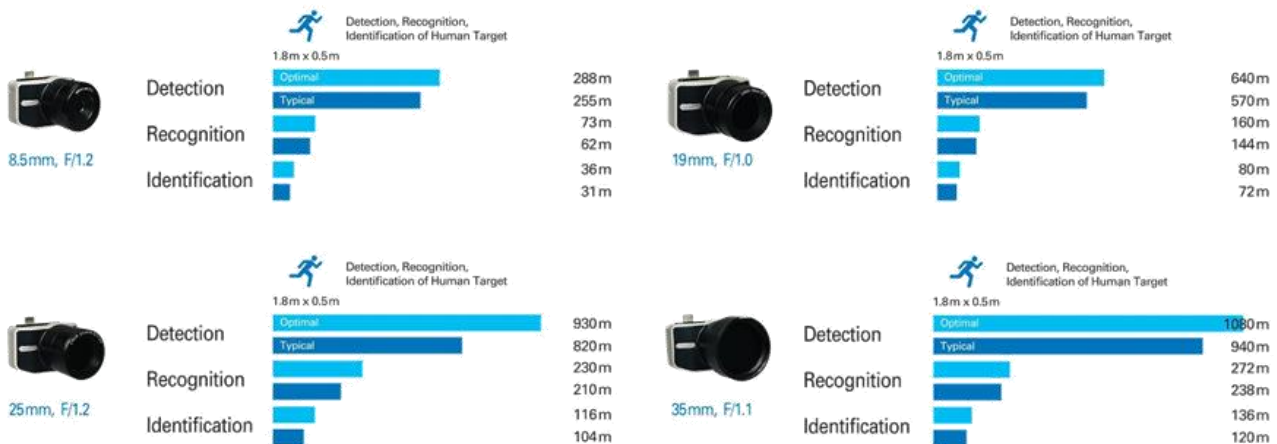
## Key Specification

Array Format	640 x 480
Pixel pitch	17 $\mu$ m
Wavelength band	8~14 $\mu$ m (Longwave infrared)
Sensitivity	$\leq$ 50mK@F/1, 300K
Frame rate	< 9 Hz or 30 Hz (Export Licence)
Scene range temperature	-10 $^{\circ}$ C ~ 120 $^{\circ}$ C
Operating temperature	-10 $^{\circ}$ C ~ 50 $^{\circ}$ C
Power Consumption	$\leq$ 500 mW
Weight	< 60g, without lens
Dimension	50 mm x 32 mm x 30 mm, without Lens
Interface	Micro USB
Platform	Android, Windows
Type of lens	8.5mm, F/1.2(Optional)
	19mm, F/1.0(Default)
	25mm, F/1.2(Optional)
	35mm, F/1.1(Optional)
FOV	8.5 mm : 73.2 $^{\circ}$ (H) x 54.5 $^{\circ}$ (V) - 93.3 $^{\circ}$ (diagonal)
	19 mm : 32.3 $^{\circ}$ (H) x 24.4 $^{\circ}$ (V) - 40.1 $^{\circ}$ (diagonal)
	25 mm : 17.3 $^{\circ}$ (H) x 13.1 $^{\circ}$ (V) - 21.5 $^{\circ}$ (diagonal)
	35 mm : 12.3 $^{\circ}$ (H) x 9.3 $^{\circ}$ (V) - 15.2 $^{\circ}$ (diagonal)
Focus range	8.5 mm : 0.4 m to infinity with refocus of 0.16 mm
	19 mm : 2.4 m to infinity with refocus of 0.14 mm
	25 mm : 1.0 m to infinity with refocus of 0.64 mm
	35 mm : 5.0 m to infinity with refocus of 0.24 mm

## Product Dimension



## Range Performance (DRI)



Reseller and Distributor Contact Europe: