

THERMAL EXPERT™

Mobile Infrared Camera (TE-Q1) QVGA 384 x 288, 17 μ m pitch



6.8 mm Lens (default)
Thermal Expert



13 mm Lens (optional)
Thermal Expert PLUS



6.8 mm Lens (default)
Thermal Expert PRO

Description

• High performance

- High resolution : 384 x 288 (17 μ m pitch)
- High sensitivity : ≤ 50 mK @ f/1.0, ≤ 80 mK @ f/1.3

THERMAL EXPERT™ for Android

- Color palettes (12 color maps)
- Storage images (IR, visible with snapshot and video)
- Digital zooming (384 x 288, 320 x 240, 240 x 160, 160 x 120)
- Image view with visible (50:50, Twin, Overlay, Floating)
- Temperature Measurement
(Alarm, Min/Max, Point/Line/Rectangle/Circle profile)
- Report (Generate pdf report)
- Level Span function (High Definition)



Level Span

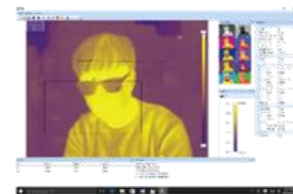


Features

- Temperature measurement for whole pixels
- Convenient image view functions with infrared and visible
- Easy graphical user interface (digital zooming, color palette...)
- Interchangeable Lens

THERMAL EXPERT™ for Windows

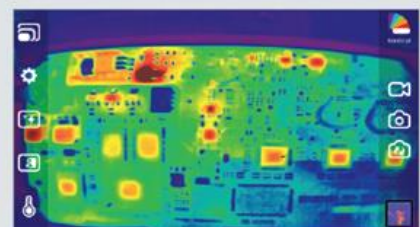
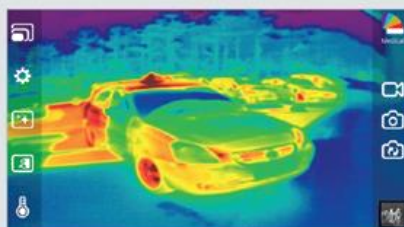
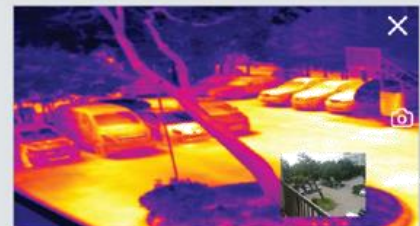
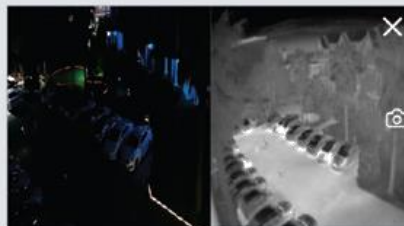
- Realtime Analysis Tool
- Check the temperature anywhere in picture using mark of Dot, Line, Square
- Alarm with sound by user's setting temperature degree
- Save and Load infrared Image with Mark
- Saving the movie with Mark is being implemented
- AIE Program (Adaptive Image Enhancement)



Window PC program

SEE THE NEW WORLD THROUGH i3system, Inc.

Image from the THERMAL EXPERT™



Key Specification

Array format	384 x 288
Pixel pitch	17 μm
Wavelength band	8 ~ 14 μm (Longwave Infrared)
Sensitivity	$\leq 50\text{mK}@F/1, 300\text{K}$
	$\leq 80\text{mK}@F/1.3, 300\text{K}$
Frame rate	< 9Hz
Scene range temperature	-10 $^{\circ}\text{C}$ ~150 $^{\circ}\text{C}$ (PLUS: -10 $^{\circ}\text{C}$ ~120 $^{\circ}\text{C}$, PRO: -10 $^{\circ}\text{C}$ ~250 $^{\circ}\text{C}$)
Operating temperature	-10 $^{\circ}\text{C}$ ~ 50 $^{\circ}\text{C}$
Power consumption	$\leq 500\text{mW}$
Weight	< 27g (with lens)
Dimension (W x H x D)	47 mm x 25 mm x 16 mm (Without Lens)
Interface	Micro USB
Platform	Android, Windows
Type of lens	6.8mm f/1.3
	13mm f/1.0
FOV[$^{\circ}$]	Wide FOV (default) : 56.3 $^{\circ}$ (H) x 41.8 $^{\circ}$ (V) - 71.4 $^{\circ}$ (diagonal)
	Narrow FOV (option) : 28.7 $^{\circ}$ (H) x 21.7 $^{\circ}$ (V) - 35.3 $^{\circ}$ (diagonal)
Focus range	Wide FOV : 0.2m to infinity with 0.19mm refocus
	Narrow FOV : 0.4m to infinity with 0.39mm refocus

Product Dimension



Range Performance (DRI)



Reseller and Distributor Contact Europe: